



GRAPH-i-DOT

MULTIMEDIA PIXEL LIGHTING

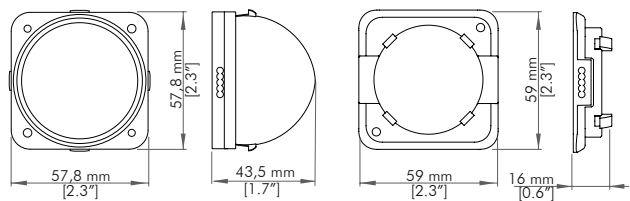
GRAPH-i-DOT is a highly performing compact module fitted with six multichip LEDs for ultra-luminous display of low-resolution video files and graphic patterns for an endless creation of dynamic visual concepts. Featuring pixel pitch adjustment and outdoor rated configuration, even for underwater applications in its flat lens version, **GRAPH-i-DOT** is also available with alternative opaline dome to enable maximum installation adaptability and design flexibility.



GRAPH-I-DOT

GRIVEN 

GRAPH-i-DOT



CODES

AL4700 GRAPH-i-DOT

OPTICS

FL Flat clear diffuser
DO Opaline dome

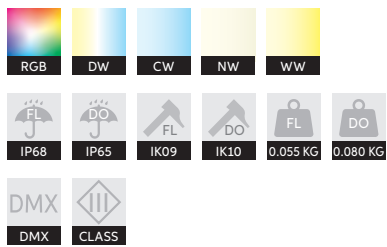
LED TYPE

RG RGB
DW From 2700K to 6500K
CW Cold White 6500K
NW Natural White 4000K
WW Warm White 3000K

NOTES

GRAPH-i-DOT must always be purchased with AL4707 Address setting DMX driver to set the DMX address.
More GRAPH-i-DOT units can be addressed with one AL4707.

FEATURES AND OPTIONS



ACCESSORIES



TECHNICAL SPECIFICATIONS

GRAPH-i-DOT is an ultra compact single pixel fixture module (IP68 FL version, IP65 DO version), whose transparent plastic body hosts 6 mid-power RGB, Cold White, Natural White, Warm White or, on request, monochrome power LEDs. Available with flat clear diffuser or opaline dome. Dimensions: 59 mm x 16 mm x 59 mm, 57.8 mm x 43.5 mm x 57.8 mm (with dome). Available in DMX remote control mode. GRAPH-i-DOT must always be purchased with AL4707 Address setting DMX driver to set the DMX address. More GRAPH-i-DOT units can be addressed with one AL4707. IP65 separate electronic driver. Power supply: Electronic driver 100÷277V / 50-60Hz LED module 24V DC. Power consumption: 1.44 W (max intensity). Electrical class: III. Operating temperature: -40°C to 50°C (-40°F to 122°F).

DIGITAL CONTROL SYSTEM SPECIFICATIONS AND CONFIGURATIONS AVAILABLE ON OUR WEBSITE



VIETNAM_Hoang Van Thu-Bridge, Hai Phong